

Product datasheet

TOPCLIP



Kurzbeschreibung:

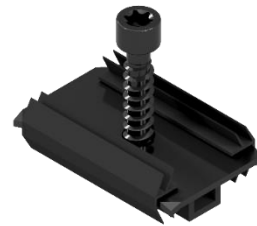
The clip is suitable for fastening grooved decking boards to a wooden or bamboo substructure or aluminum substructure. Due to its special shape, it fits into all common grooves without undercut. The screw is pre-assembled for easier application. Both for use on wood with scraping groove and for use on aluminum with drill point.

There are two versions: A version with wood screw, which has a cockroach groove and one with drill screw, for use on aluminum profiles.

Batchnumber: 592748392

Material:

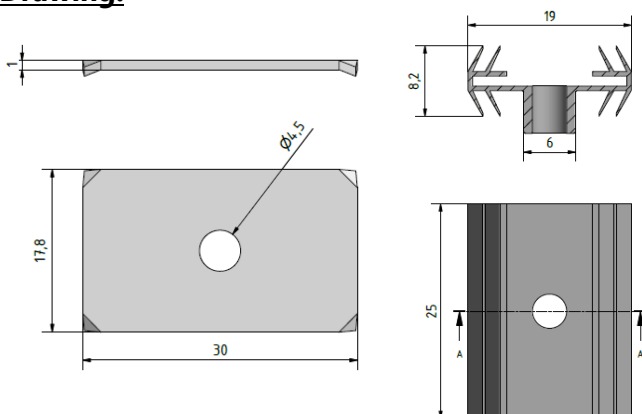
Material holder: Polypropylene
Material clamping plate: 1.4016 with zinc lamella coating



Dimensions:

Dimensions holder: 10,2x25x19mm
Dimensions clamping plate: 1x30x17,8mm

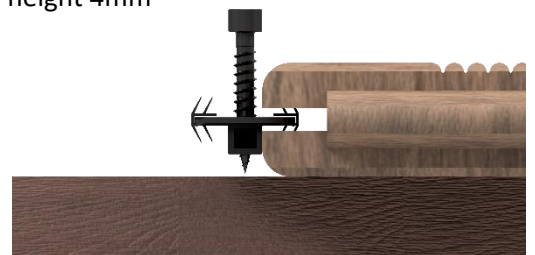
Drawing:



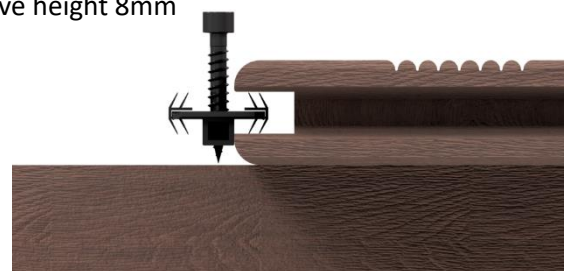
Technical information:

The clip is held in the groove by its arms for mounting. This simplifies the assembly.

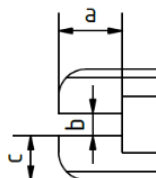
Groove height 4mm



Groove height 8mm



a: min. 6,5mm
b: 4mm-8mm
c: 4mm-10mm



If you are not familiar with the use of this product and in particular with its intended use, please contact us.